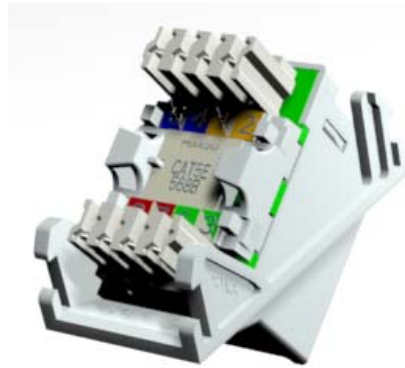


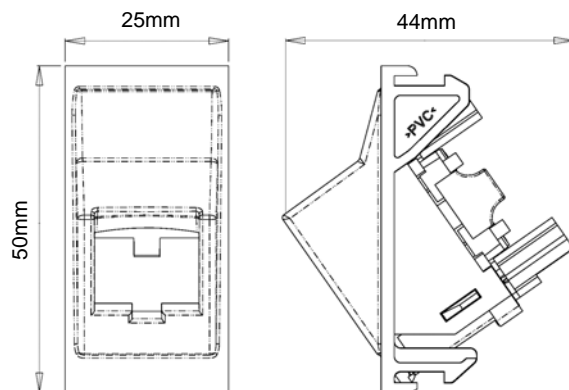
### Product Overview

The Pressac Cat5e Eurostyle RJ45 Angled Module is designed to complement the existing range of Eurostyle modules and faceplates. Compliant with TIA/EIA-568-B.2-1 specifications, its main advantage is the patchcord enters the socket aperture at a 35 degree angle, which reduces snagging, and inadvertent damage.



### Features & Benefits

- 35° Angled entry
- 568B colour coding
- 110/LSA compatible IDC connectors
- Shuttered access to protect from dust ingress
- V0 flame retardant PVC
- EIA/TIA 568B-B.2-1 tested



### Additional Information

Often used in faceplates that are mounted in trunking close to desks, the Cat5e Eurostyle Angled Module can be clipped into either standard or bevelled Eurostyle faceplates. A flat surface adjacent to the socket entry is provided for port identification that could be achieved by the application of a printed self adhesive label.

#### Pressac Communications Limited

Glaisdale Drive West, Bilborough, Nottingham NG8 4GY

Tel: +44 (0)115 936 5258 Fax: +44 (0)115 936 5252

E-mail: [sales@presscomm.co.uk](mailto:sales@presscomm.co.uk)

#### Technical Support

Tel: +44 (0)115 936 5238

E-mail: [tech\\_support@presscomm.co.uk](mailto:tech_support@presscomm.co.uk)

