

Recommended Termination Procedure for 6C RJ45 Star Point Connection

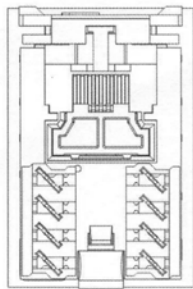


fig 1
Rear view of socket

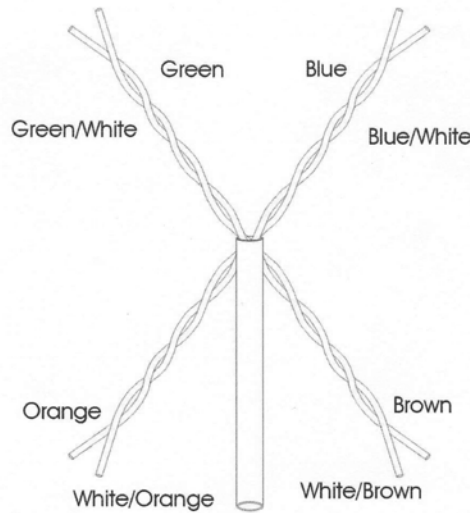


fig 2

Strip outer sheath to approximately 40mm
separate the wires as in fig 2

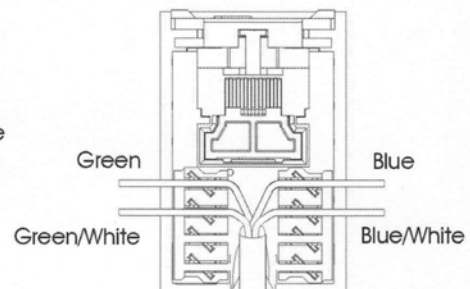


fig 3

Place cable between the IDC connectors
and terminate as indicated in fig 3

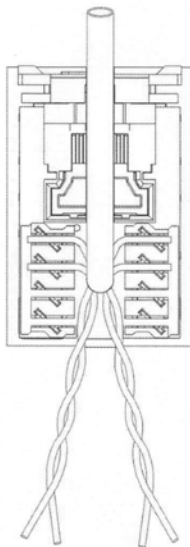


fig 4

Fold cable back over the RJ45 socket
as indicated in fig 4

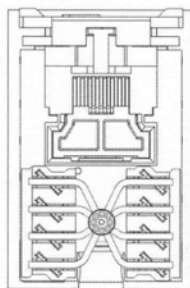


fig 5

Place wires in IDC connectors
as indicated in fig 5
STAR POINT CONNECTION

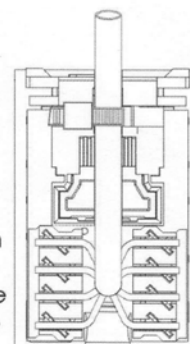


fig 6

Terminate the wires as indicated in
fig 6 and secure the cable to the
RJ45 socket using the cable tie

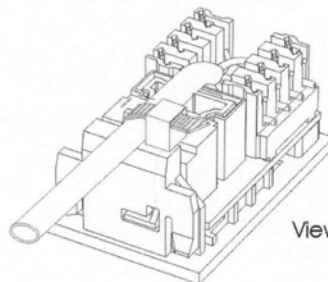


fig 7

View of correctly terminated assembly

data sheet